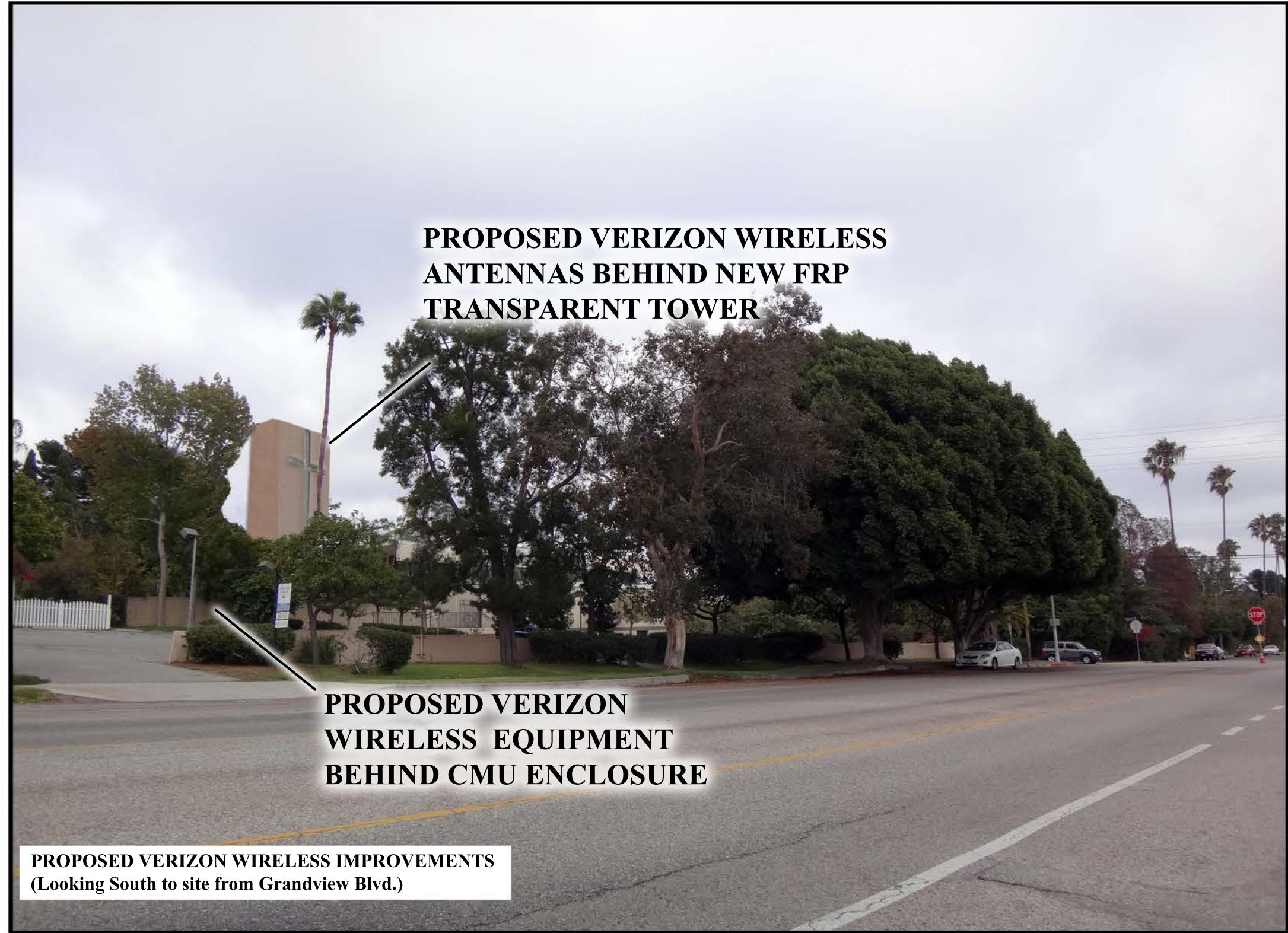


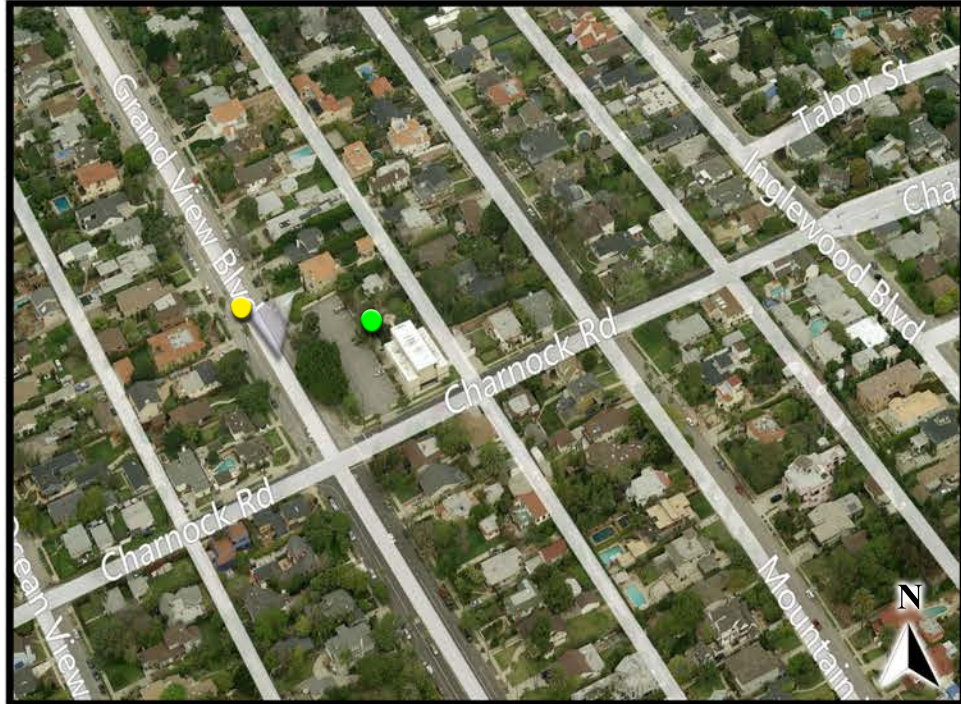


**KEESHEN**  
3590 Grand View Blvd, Los Angeles, CA 90066

**Proposed**



**Point of View: Looking South to site**



**PROPOSED VERIZON WIRELESS IMPROVEMENTS**  
(Looking South to site from Grandview Blvd.)

Accuracy of photo simulation is based upon information provided by project applicant. The proposed installation is an artistic representation of an antenna monument and it is not intended to be an exact reproduction. The final will have cables, cable ports and various attachments, such as antennas, nuts and bolts. Every effort will be made to disguise these components and they will not be readily apparent to the casual observer or passerby. However, upon close scrutiny, the true nature of the installation will be apparent.



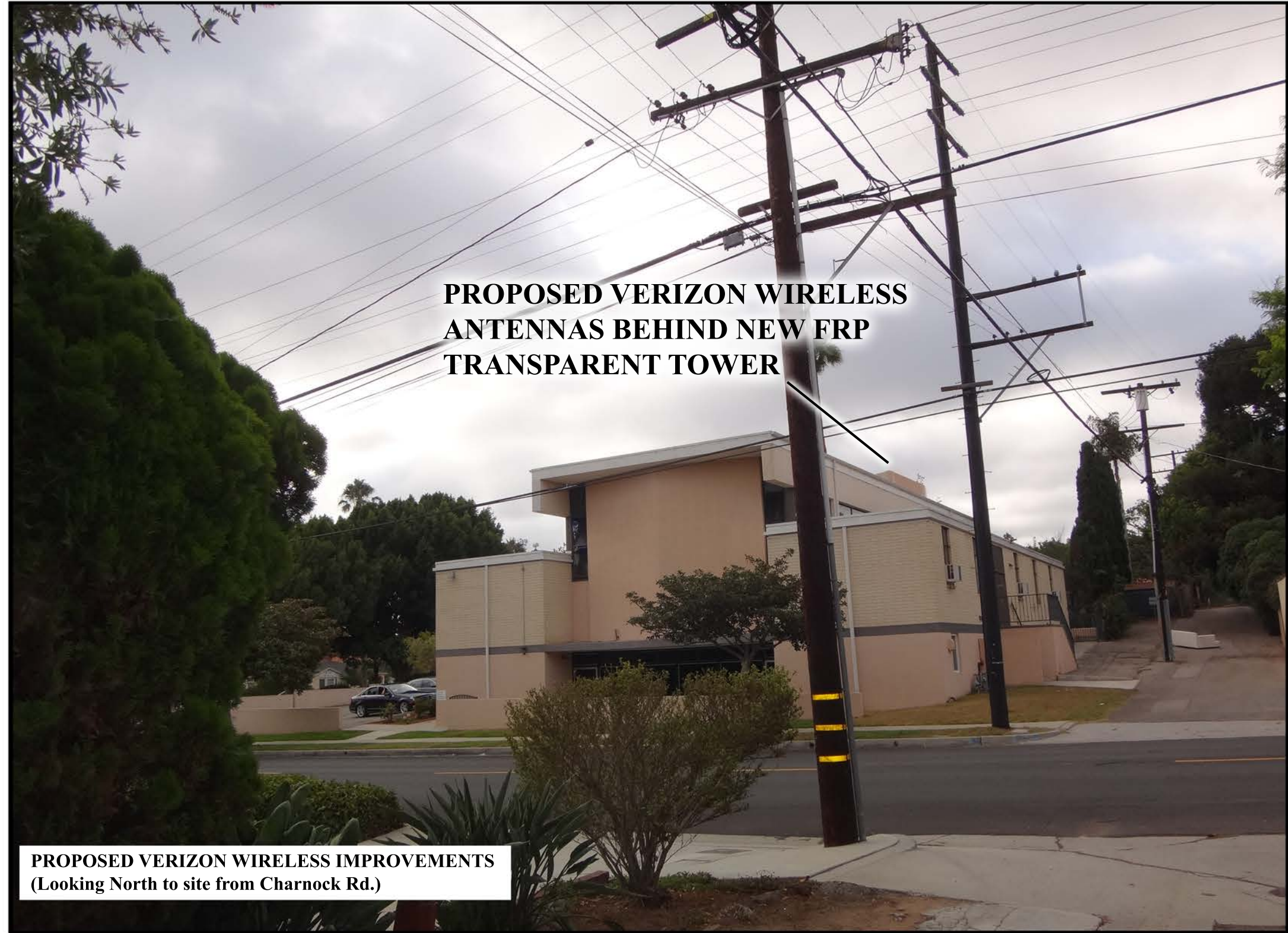


Existing

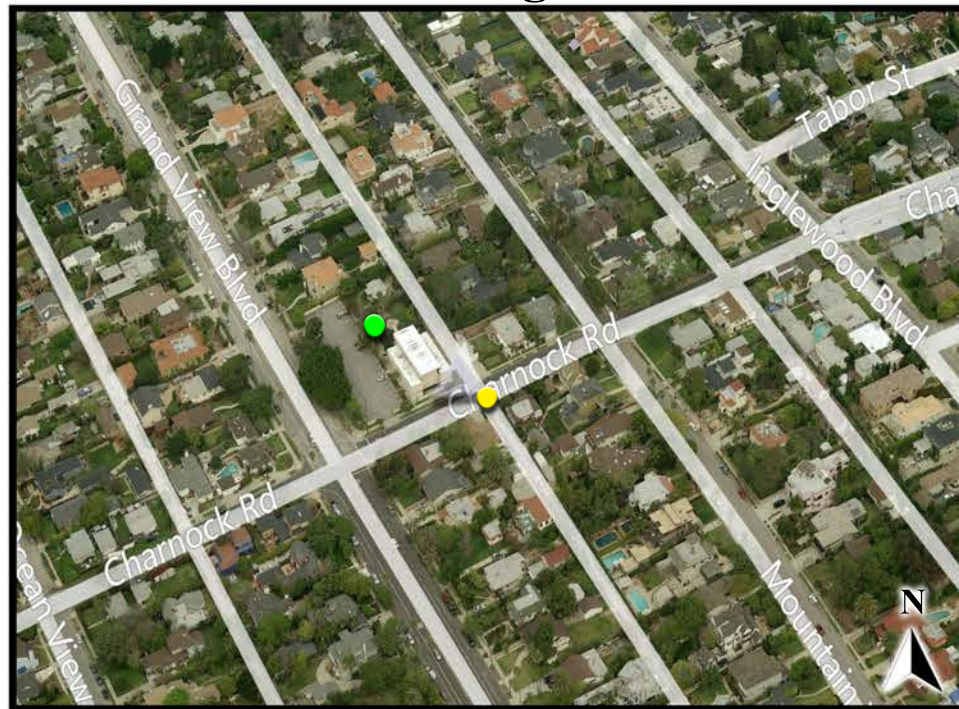


KEESHEN  
3590 Grand View Blvd, Los Angeles, CA 90066

Proposed



Point of View: Looking North to site



PROPOSED VERIZON WIRELESS IMPROVEMENTS  
(Looking North to site from Charnock Rd.)

Accuracy of photo simulation is based upon information provided by project applicant. The proposed installation is an artistic representation of an antenna monument and it is not intended to be an exact reproduction. The final will have cables, cable ports and various attachments, such as antennas, nuts and bolts. Every effort will be made to disguise these components and they will not be readily apparent to the casual observer or passerby. However, upon close scrutiny, the true nature of the installation will be apparent.





Existing

KEESHEN  
3590 Grand View Blvd, Los Angeles, CA 90066

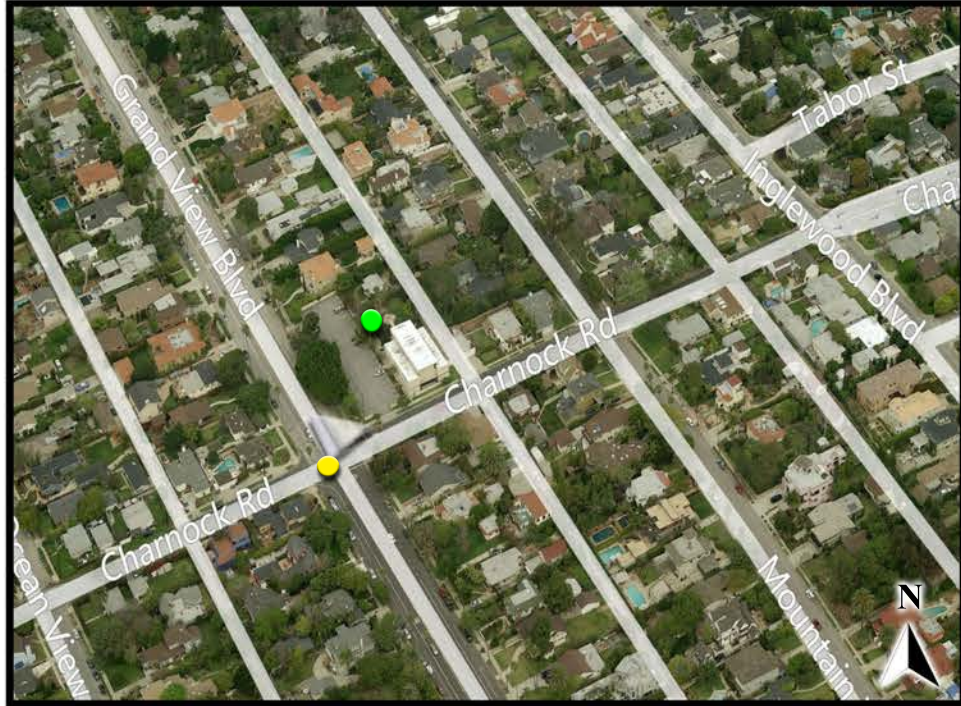
Proposed



**PROPOSED VERIZON WIRELESS  
ANTENNAS BEHIND NEW FRP  
TRANSPARENT TOWER**



**Point of View: Looking Northeast to site**



**PROPOSED VERIZON WIRELESS IMPROVEMENTS  
(Looking Northeast to site from corner of Grand View  
and Charnock Rd.)**

Accuracy of photo simulation is based upon information provided by project applicant. The proposed installation is an artistic representation of an antenna monument and it is not intended to be an exact reproduction. The final will have cables, cable ports and various attachments, such as antennas, nuts and bolts. Every effort will be made to disguise these components and they will not be readily apparent to the casual observer or passerby. However, upon close scrutiny, the true nature of the installation will be apparent.